




DBR elite



PARVATAPUR

Your Gateway to Elite Living.



We are just not building a house  
we are designing your life style

Promoted by



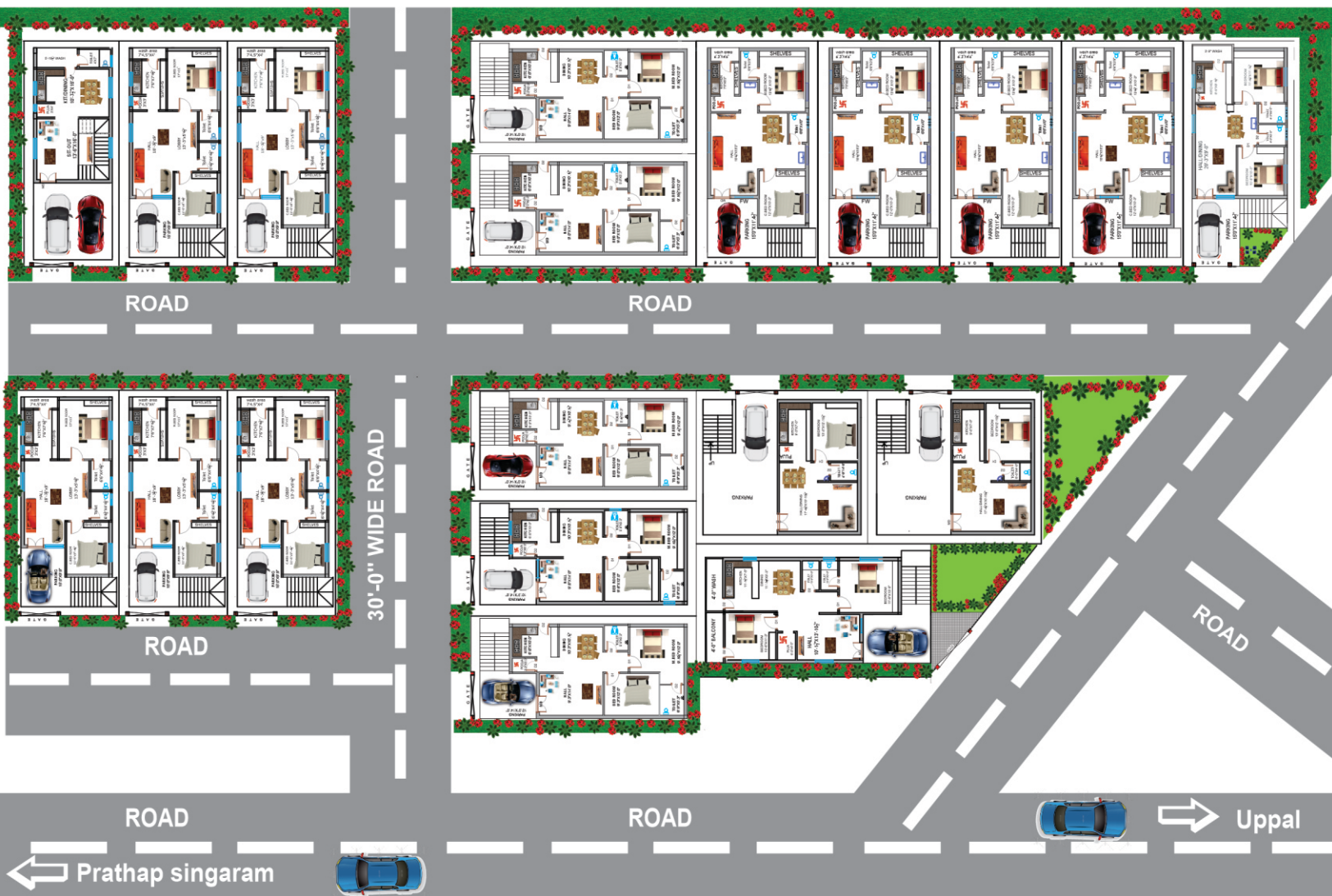
H.V. CONSTRUCTIONS

PEACE • SECURITY • COMFORT

WE DESIGN YOUR DREAMS



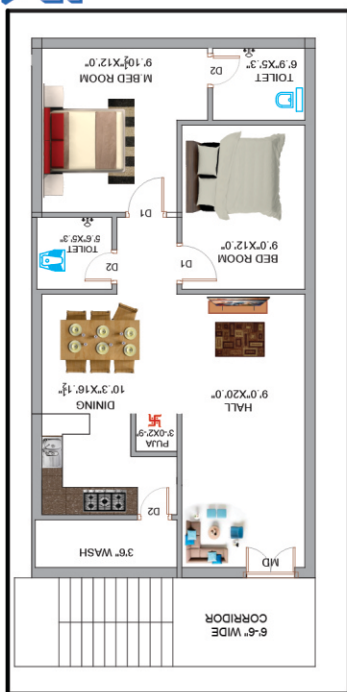
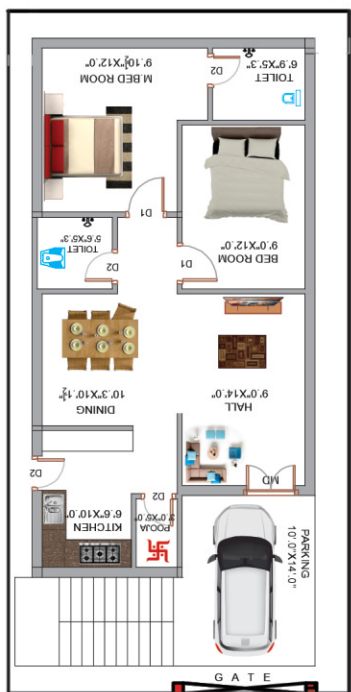
# Layout Plan



East Ground Floor



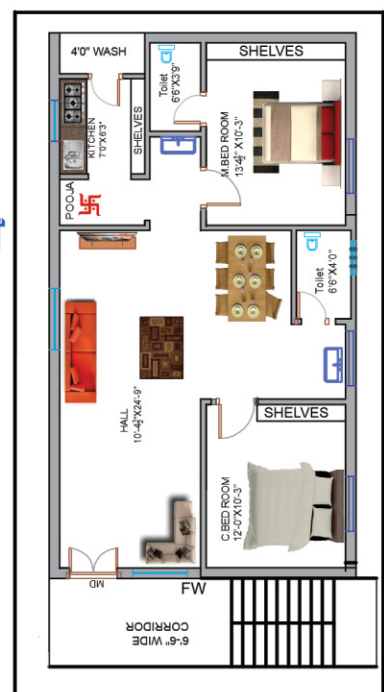
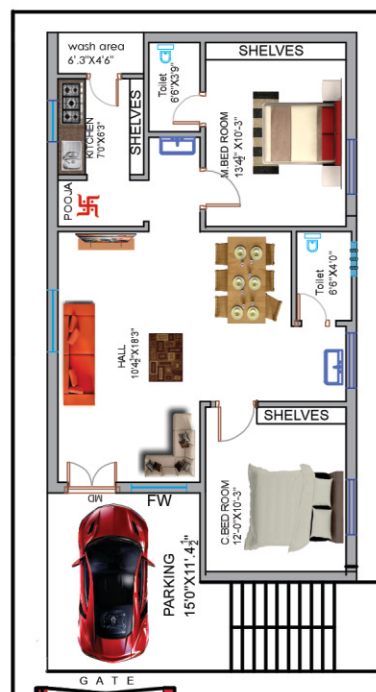
East First Floor



North Ground Floor



North First Floor



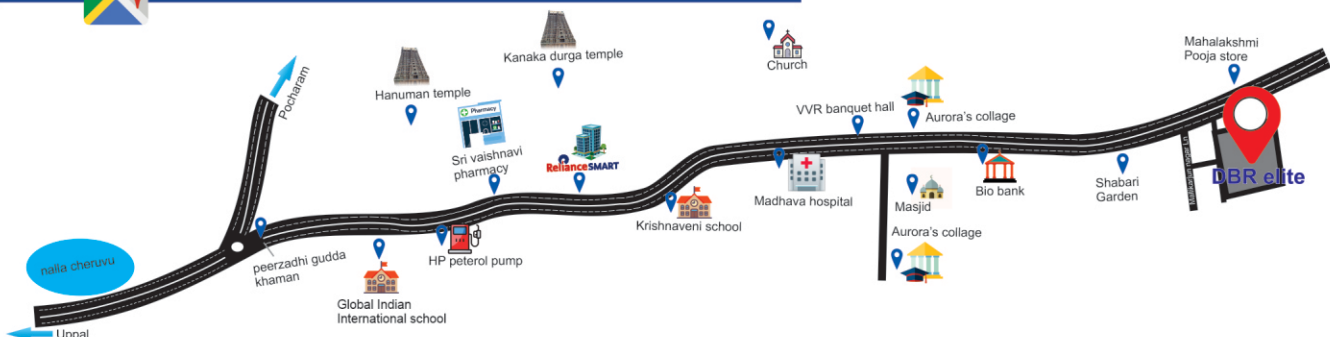
# Elevation



DBR Elite is a project with an ambition to create elite and unique living experiences. We Hv Constructions promoting independent houses of prime land, crafted exquisitely to suit your individual needs. The unmatched living experience here is articulated to leave you feeling calmer, happier and more alive...



## Location Plan & Highlights



- 2 km to Global Indian International School.
- 0.5 km to Arora Engineering College.
- 2.5 km to Aditya Hospital.

- 3 km to Asian Cine Square.
- 2 km to Warangal Highway.

# SPECIFICATIONS

<b>Structure</b>	◆ RCC framed structure with seismic resistant design <b>Birla / Chitinadu</b> Cement & Sree/ <b>Sarwotham</b> High yield TMT steel.
<b>Super Structure</b>	◆ External 9" and Internal of 4 ½" thick walls with <b>light weight red brick</b> in cement mortar. ◆ Compound wall with solid cement brick. ◆ Cement Shelves provided in bedrooms and kitchen. No shelves will be provided in hall.
<b>Plastering</b>	◆ Internal Two coats, with sponge finishing. ◆ External Two coats, with sponge finishing.
<b>Doors and Windows</b>	◆ <b>Main Door</b> : Frame and Shutters with Best Teak Wood with S.S. fittings. ◆ <b>Internal Doors</b> : Medium teak wood frames with designed flush door shutters with painting and S. S. fittings. ◆ <b>Windows</b> : Frames and Shutters with UPVC with glazed glass and iron safety grills.
<b>Flooring</b>	◆ Vitrified tiles of 24"x24" size of branded company for Hall, Dining, Bed Rooms and kitchen. ◆ External flooring within the compound wall is of PCC flooring, and Parking Tiles in Parking area. ◆ Steps with <b>Marble</b> with <b>Stainless Steel Railing of regular design</b> .
<b>Kitchen</b>	◆ Granite platform with Stainless Steel or Granite sink with Granite dado up to 2' height. ◆ Provision for exhaust fan/Chimney.
<b>Toilets</b>	◆ All toilets with Anti skid ceramic tile flooring and 6' 6" wall cladding with digital tiles of branded company. ◆ WC or EWC in attached toilet and Indian WC in common toilet of branded company. ◆ Hot and cold wall mixture with shower in all toilets. ◆ CPVC pipeline <b>Ashirvad /Supreem Company</b> with standard tap fittings, and Drainage pipe line with rigid P V C fittings. ◆ <b>Plumber Company Nectar</b> Model or Equivalent tap fittings. ◆ Geyser provision will be given for all toilets.
<b>Electrical</b>	◆ Adequate electrical points with Concealed copper wiring ( <b>Anchor or Great white or</b> equivalent made). ◆ Computer power point and internet wiring will be given in children bedroom. ◆ AC Provision will be given in master bedroom. ◆ Telephone and Internet wiring facility will be given in hall. ◆ Two way switches and TV provision will be given in Master Bedroom. ◆ <b>Anchor Roma /Grate white / Polycab</b> or equivalent made Modular electrical switches will be provided. ◆ Inverter provision will be provided. ◆ Washing machine provision will be provided.
<b>Painting</b>	◆ <b>Internal</b> : Asian Premium Emulsion paint with roller finishing over Birla/ Asian Putty. ◆ <b>External</b> : Elevation Putty finishing with apex paints and all other sides with ACE Paints.
<b>Others</b>	◆ <b>M.S Gate will be provided as per the design.</b> ◆ <b>1000 Lts of Plastic over head tank will be provided.</b> ◆ <b>Borewell and motor of branded company will be provided.</b> ◆ <b>Water sump will be provided for individual house.</b>
<b>Note</b>	◆ The Owner/buyer is free to make necessary internal alterations in the specifications or plan to suit his requirements. Extra cost for all such alterations should be borne by the Purchaser/Owner. ◆ The owner/buyer is not allowed to make any changes in elevation side including colours. ◆ Registration charges, GST Tax, house assessment charges, water connection charges, electricity meter and other statutory taxes/ charges of State & Central Govt should be borne by the Owner/purchaser.
<b>Amenities:</b>	◆ <b>Rain Water Harvesting pits.</b> ◆ <b>Electricity lines and Street lights.</b> ◆ <b>Exquisite Landscaping</b> ◆ <b>B.T Roads.</b> ◆ <b>Underground drainage system.</b>

Promoted by



**H.V. CONSTRUCTIONS**

PEACE • SECURITY • COMFORT

Mahalaxmi Arcade, Plot # 1, P & T Colony, Warangal Highway, Medipally (V), Ghatkesar (M), Medchal Dist. - 500 092.

E-mail : hvconstructions.2014@gmail.com

website : www.hvconstructions.com

Cont. : **96667 17135, 98491 99077, 98490 33319** Office : **040 - 35928133**

Consultant Engineers

**S A A C**

Kothapet, HYDERABAD - 60.

Brochure Designed by

**B&W Printers @ 9959 222 555**

Note : This brochure is only conceptual not a legal offer